

**ON-PREMISE
FOR IN-SCHOOL
LEARNING**

**BLENDED
LEARNING**

**CLOUD-BASED
SUPPORTING
REMOTE LEARNERS**

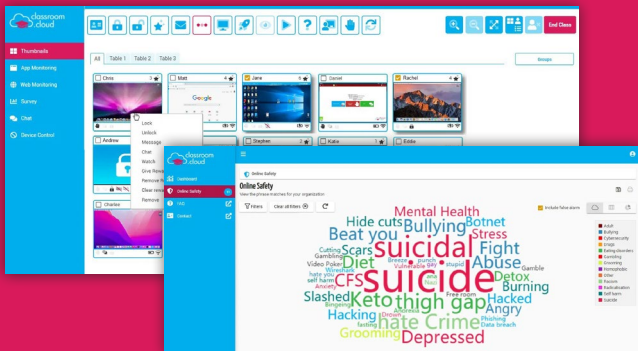
Instruct, Monitor, Protect, and Engage your Students

NetSupport's award-winning solutions include on-premise and cloud-based classroom management, teaching, and online safety tools - supporting multiple platforms and devices, across mixed learning environments.

Contact us for more information!

Aurea Z. Sanabria, Territory Account Manager - Northwest
Phone: 770-203-4939 | Phone (toll free): 1-888-665-0808
Email: a.sanabria@netsupport-inc.com

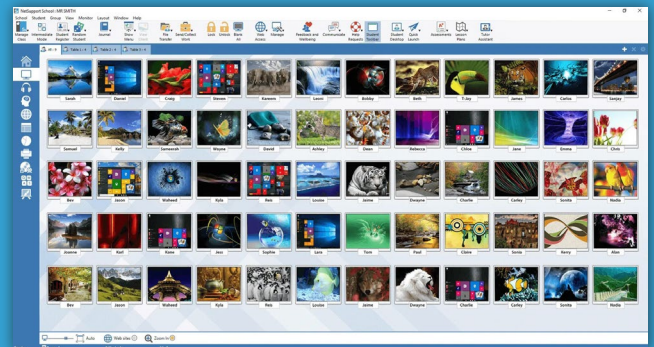




Cloud-based Classroom and Remote Learning with Online Safety

classroom.cloud is a focused teaching, classroom management, and online safety tool. Cloud-based and easy to use, it helps teachers monitor and instruct in a school classroom or with remote learners – while the school can create a safe learning environment. It also comes with a Technician Toolkit, helping the IT team to maximize their school's technology.

- ✔ Interact with students in real time
- ✔ Support explanations with screen and audio sharing
- ✔ Monitor and remote control students' screens
- ✔ Track students' understanding and progress in real time using surveys
- ✔ Assign rewards to students during the lesson
- ✔ Student toolbar enables students to keep track of lesson details
- ✔ Support students with help requests - without their peers knowing
- ✔ Send an attention-grabbing message or instruction to each student's device
- ✔ Allow/restrict website and application usage
- ✔ Control USB and webcam use, plus mute/unmute audio on the students' devices - all during lesson time
- ✔ Online Safety toolkit with keyword monitoring, word cloud of trending topics and contextual intelligence to determine risk severity
- ✔ Microsoft SDS, Google Classroom, ClassLink and Clever integration
- ✔ Technician Toolkit including hardware and software inventory, and remote control
- ✔ Plus much more!



Feature-rich Classroom Instruction and Monitoring

NetSupport School is the market-leading classroom management and instruction solution, providing a wealth of monitoring, control, collaboration, and assessment features to help maximize the benefits of technology-led teaching and learning in the school classroom. Supporting all students' learning styles, it works seamlessly across all types of platforms, devices and LAN/WAN environment.

- ✔ Teacher user modes to support their edtech confidence
- ✔ Broadcast teacher and student screens
- ✔ Real-time screen monitoring with remote control
- ✔ Virtual whiteboard with a wealth of drawing and annotation tools
- ✔ A wealth of class assessment surveys and tests with gamified options
- ✔ Digital journals of lesson content, perfect for revision aids
- ✔ File collection and distribution
- ✔ Allow/restrict website and application usage and lock and blank students' screens
- ✔ Audio monitoring/language lab tools
- ✔ Chat and send messages to students
- ✔ Support students with help requests - without their peers knowing
- ✔ Student feedback visuals to gauge wellbeing and topic confidence
- ✔ Teacher, T/A and Student apps
- ✔ Dedicated Technician console
- ✔ Flexible range of connection methods to students' devices, including SIS Integration (Class Link OneRoster and Google Classroom)
- ✔ Plus much more!