



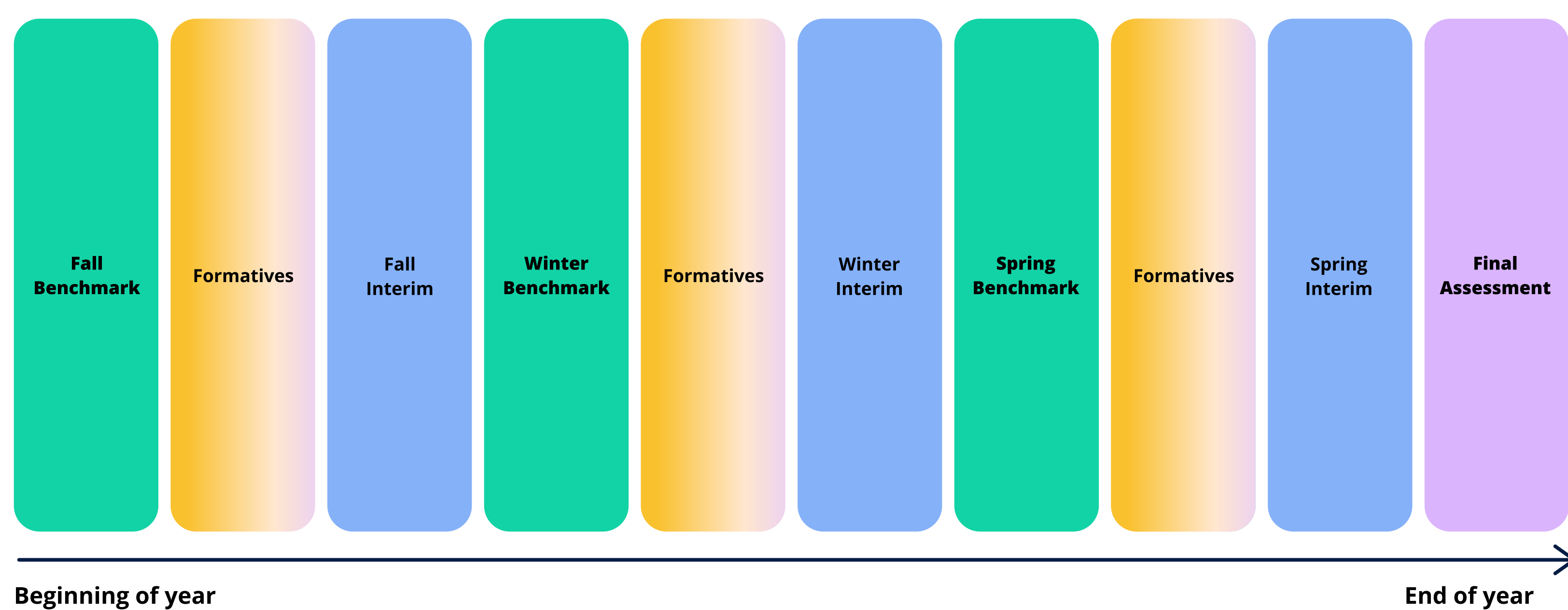
Maybe you think “Formative” is just a small assessment in the yearly cycle.

# Formative is more than an assessment.

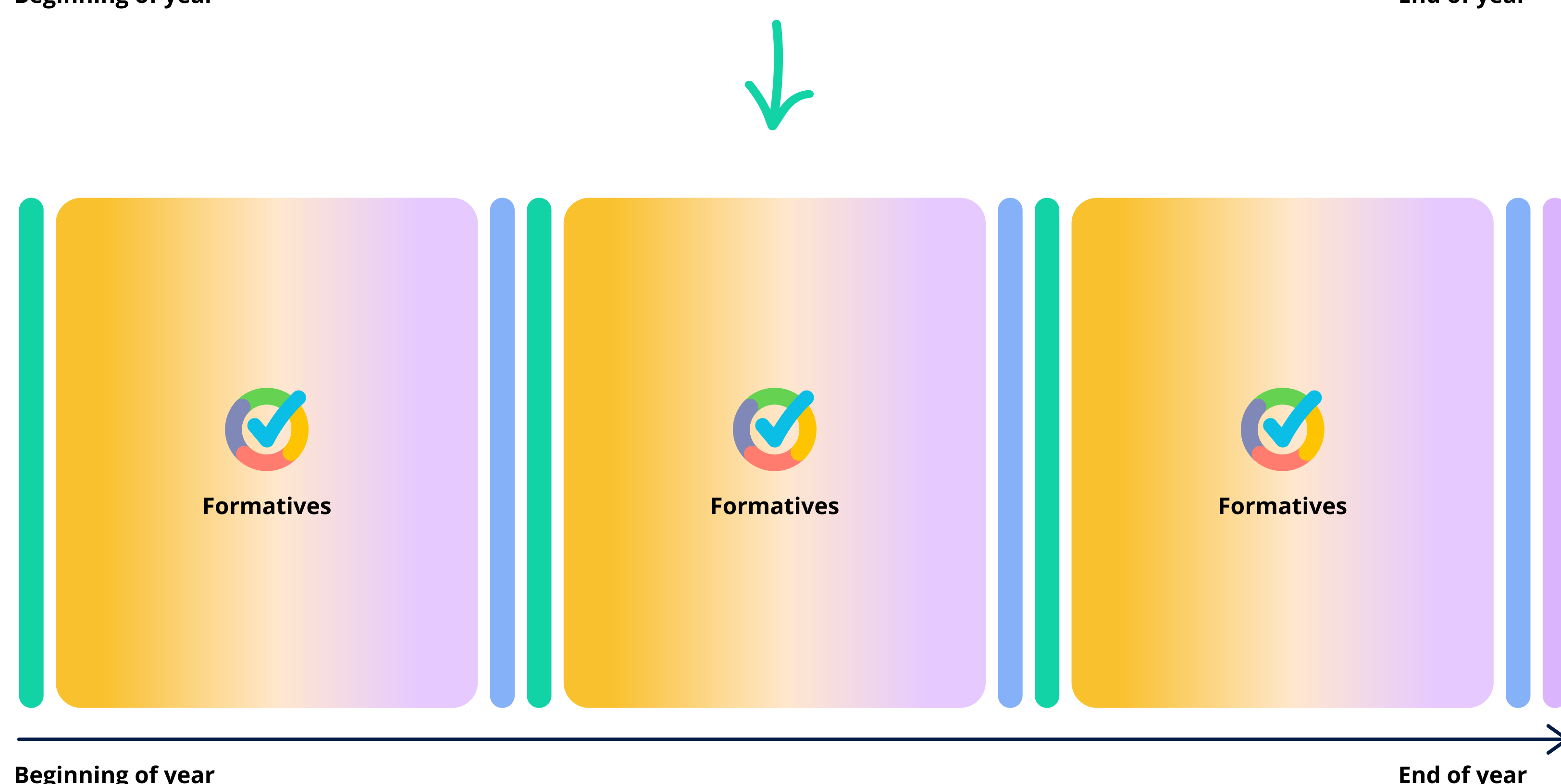
Formative practice uses the right assessments at the right time. Teachers can see what students know before making informed decisions.



## How do we assess?



The “traditional” assessment schedule: too much time passes between assessing what students know and then testing them.



True formative practices give educators immediate insights into learner knowledge, which leads to stronger interim and benchmark performance.

# Assessment + Instruction = Formative

Formative eliminates the gap between instruction and assessment. In one easy-to-use platform, teachers can **reach every student**. And our end-to-end support covers everything from product updates to professional development.



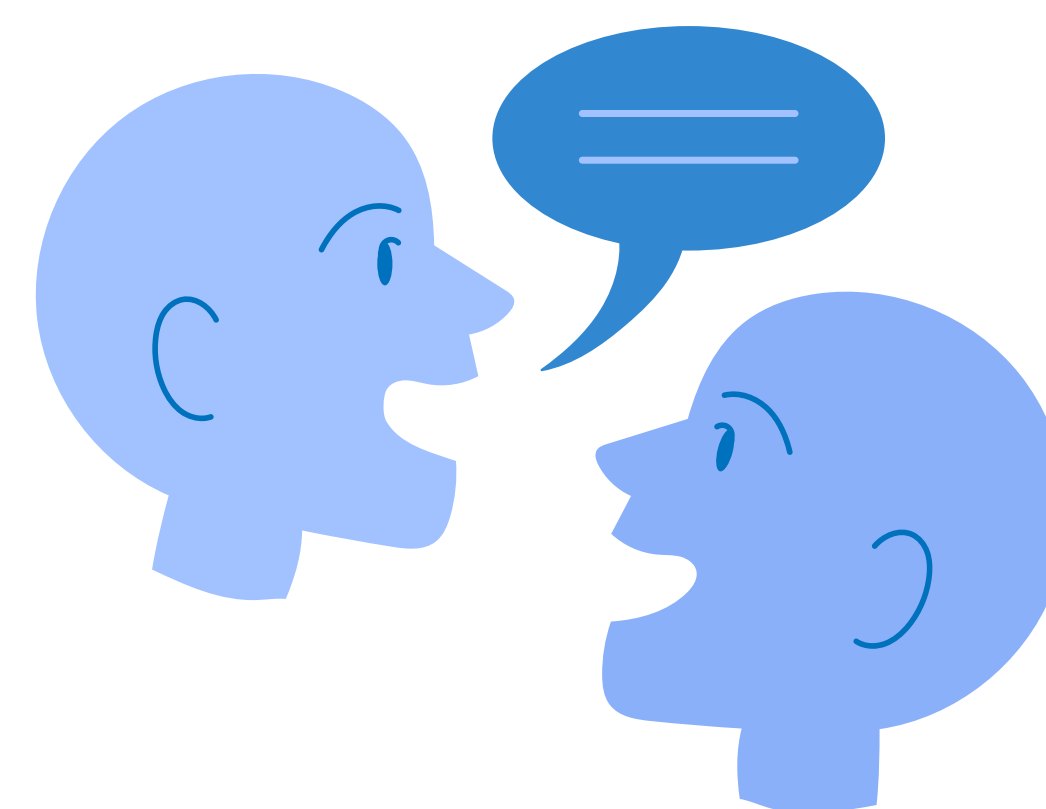
Pinpoint which students need help using instant student response data



Save time and provide immediate feedback with auto-grading



Leverage standards-aligned instruction and assessment materials



Work within PLCs to collaborate on formative-driven lessons

**Shift Happens:** shift from sporadic student assessments to daily formative practices, and **experience the power of Formative at Formative.com!**